

Southeast Washington  
Economic  
Development  
Association

**SEWEDA**



# Who is SEWEDA?

- A 501 C-3 non-profit
- The lead economic development and transportation planning organization for a four-county region (Asotin, Columbia, Garfield, and Whitman) in Southeast Washington State



# SEWEDA's Economic Development Mission Statement

To initiate and implement economic development planning, and market and promote the region in such a way as to foster and create new jobs, new investment and new development that enhance economic vitality and quality of life while protecting the unique character and quality of our culture and environment.



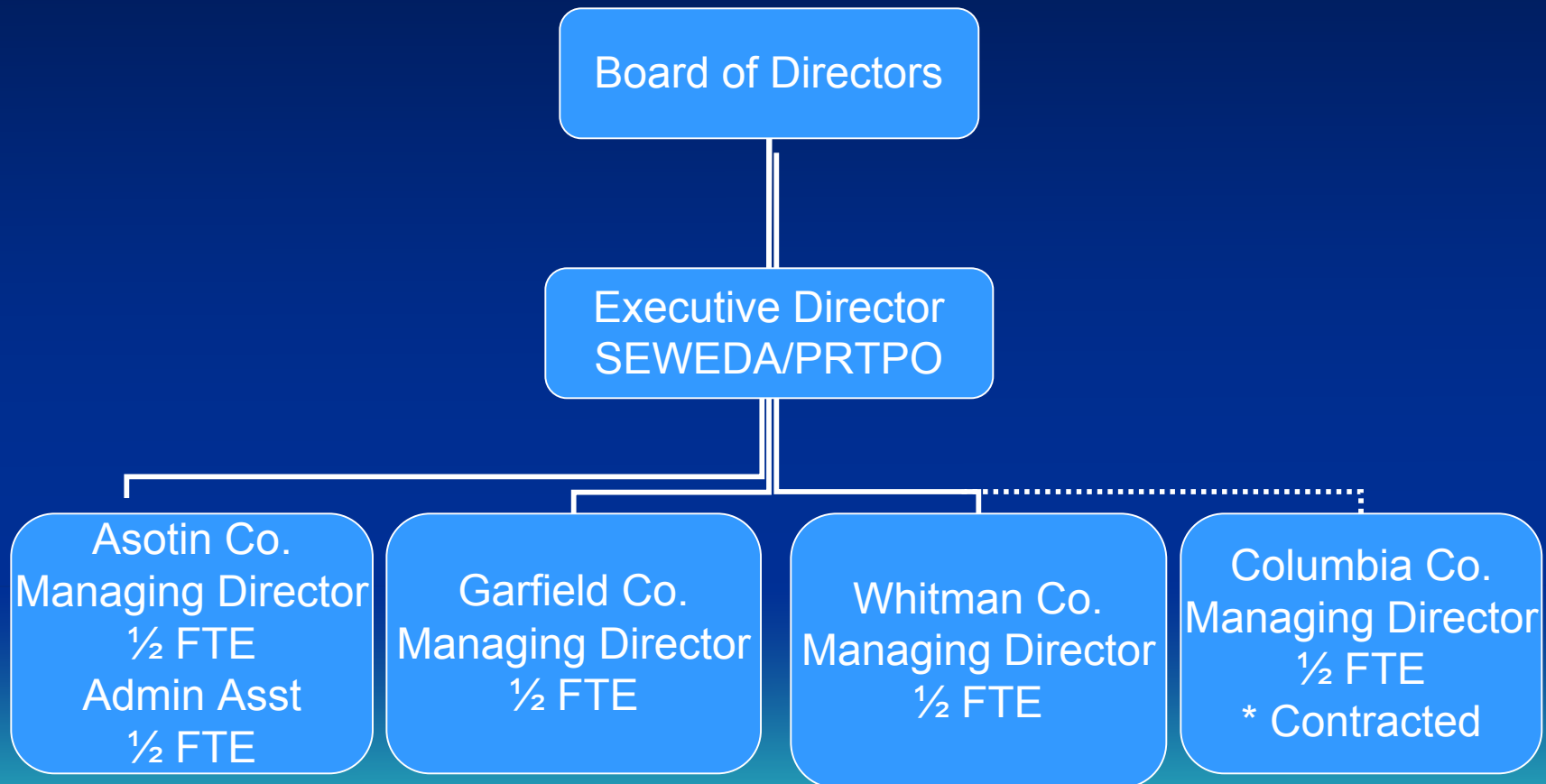
# SEWEDA

## Six Key Economic Development Goals:

- To develop the region's ability to plan for prosperity
- To increase the availability, skill level, and productivity of the District's workforce
- To increase the availability of housing options for the resident of the area
- To encourage development, maintenance, and operations of facilities, utilities and services necessary to support economic development
- To enhance economic vitality through recruitment, startup, retention, and expansion of business ventures
- To foster the development of visitor trade throughout the District



# SEWEDA Organization Chart



# SEWEDA Economic Development Funding

Washington  
State Dept  
of Commerce  
\$167,000

Federal  
EDA  
\$67,000

Membership  
\$10,000

Private  
Donations  
\$ ??

Asotin  
County

Garfield  
County

Whitman  
County

Columbia  
County

Regional  
Expenses  
All 4 Counties



## SEWEDA's Major Recent Accomplishments

- Facilitated economic development planning (All 4 counties)
- Assisted in retention of Ski Bluewood (Columbia County)
- Key driver/facilitator of Snake River Boat Builders Export Program (Asotin and Whitman Counties)
- Major contributor/sponsor of WSU/Port of Whitman/SEWEDA Business Plan Competition (Whitman and Asotin County)
- Key supporter and contributor of Lower Snake River and Palouse Wind Farm project (Columbia, Garfield and Whitman Counties)
- Facilitation of Agri-Tourism Program and promotion of Ag-tourism resources (All 4 counties)



# SEWEDA Support Options

## Option 1 – Sponsorship

\$10,000 – Platinum

\$ 5,000 – Gold

\$ 2,500 – Silver

## Benefits –

1. Receipt of all SEWEDA economic development and PRTPO transportation planning news via email blasts and newsletters.
2. Recognition as major sponsor through newsletters, annual report, and board of directors meetings.
3. Opportunity to serve on special SEWEDA Blue Ribbon advisory board.
4. Includes complimentary membership in SEWEDA organization.



## Option 2 – Membership

\* See attached membership application.

### Benefits –

1. Receipt of quarterly SEWEDA economic development and PRTPO transportation planning newsletters.
2. Opportunity to be nominated to SEWEDA Board of Directors.
3. Opportunity to network with other parties within four county (Asotin, Columbia, Garfield and Whitman)
4. Opportunity to attend all SEWEDA (solely) sponsored training sessions at 50% of published costs.

